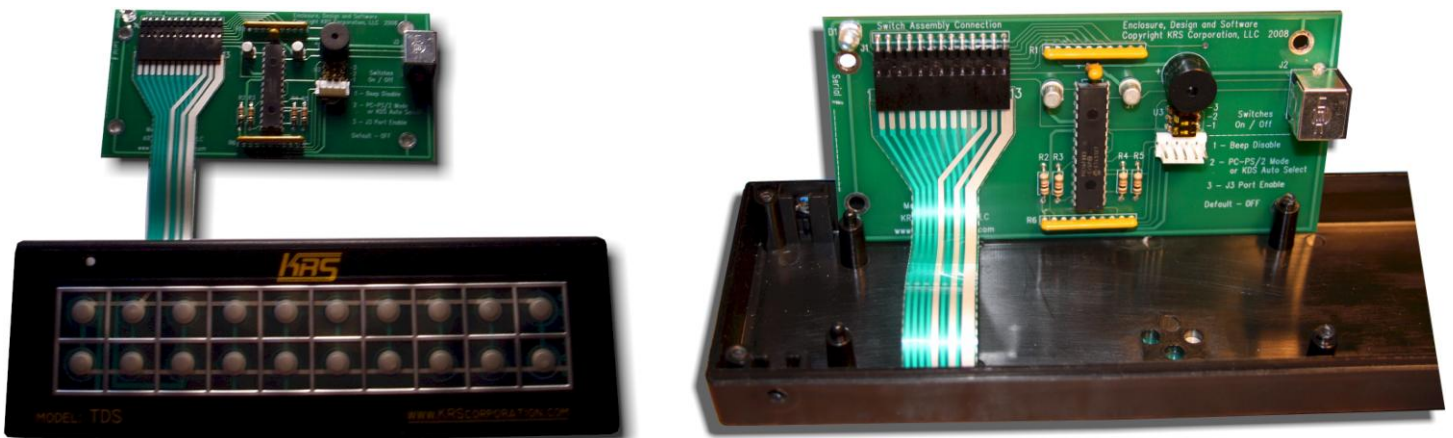


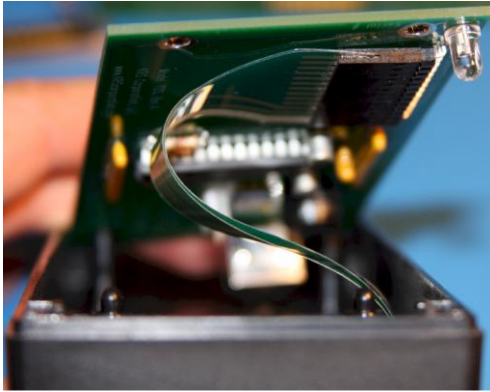
*Below is an overview of how to install a PCB into the TDS keypad housing. This works with either a KRS PCB or the OEM's circuit board.*

1. Connect the key switch cable as shown below



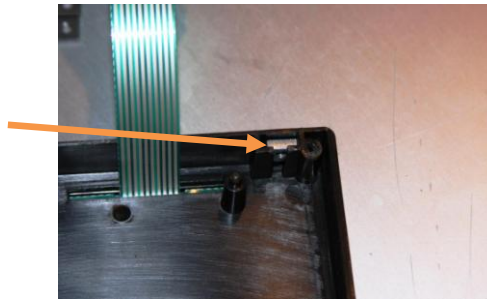
# TDS Keypad Assembly Instructions

2. The keypad cable will “Zig-Zag” when you install the PCB onto the four standoffs. The four pegs will hold the PCB down by gently snapping it down on the standoffs.

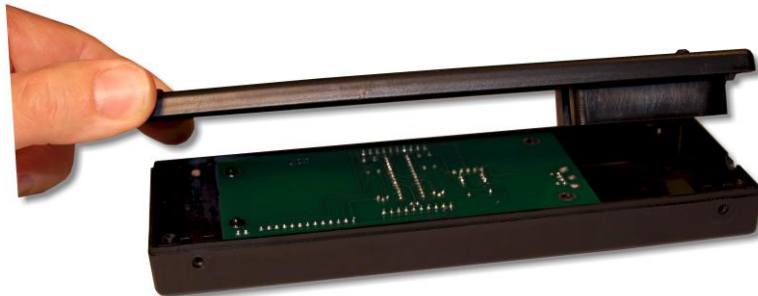


3. If you are going to mount the keypad using the four mounting holes, then drop the square nuts into each of the corners

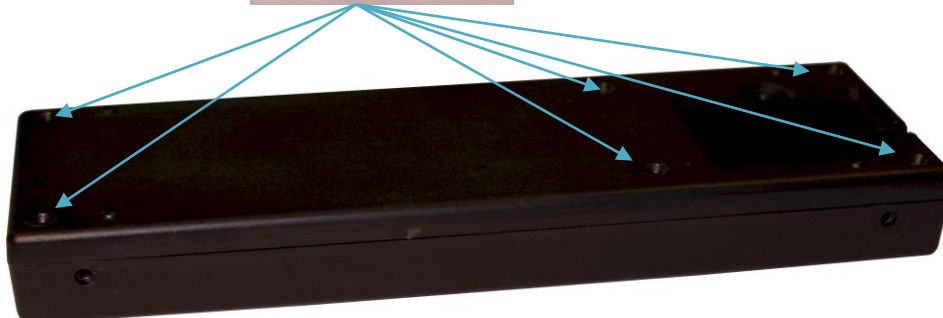
Note: Each of the corners have a thin layer of material that will need to be “poked through” in order to insert the screws later



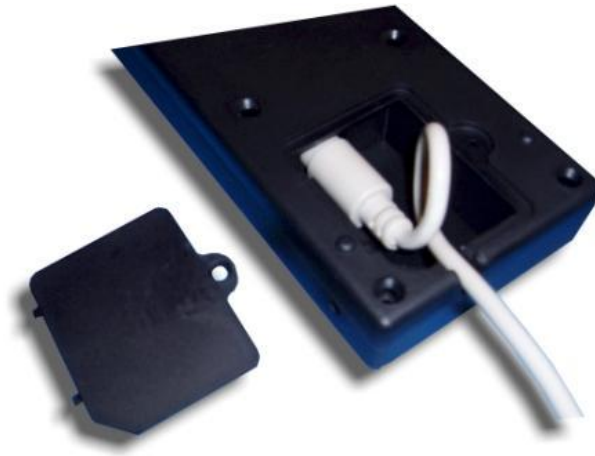
4. Position the bottom of the box as shown, aligning the cable access with the open space next to the PCB.



5. Install the Six case screws, **DO NOT OVER TIGHTEN**



6. The PS/2 cable installs with the TAB or “Flat Side” down
7. Put a loop in the cable, fold it down, and secure the cable door with the small screw.



8. Install the keypad into the bracket of your choice.